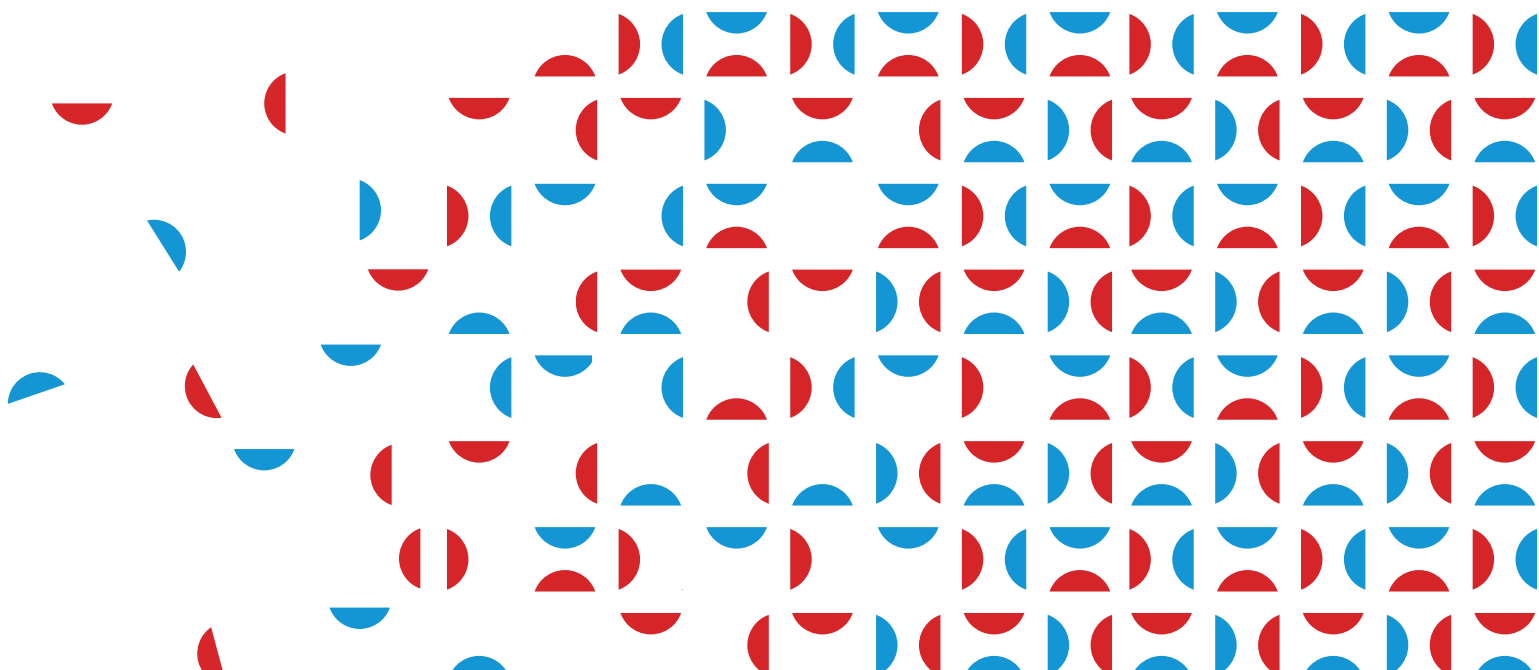


DHW SYSTEMS

DHW SEMI-INSTANTANEOUS SYSTEMS

TPS



DHW Semi-Instantaneous Systems

EPS

EPS domestic hot water heaters are pre-assembled units which, when combined with a storage tank of the desired volume, allow large quantities of domestic hot water to be quickly produced and stored at a predefined temperature, ensuring optimisation of the footprint.



The EPS heaters consist of:

- ✓ Inspectable plate heat exchanger made of AISI 316 stainless steel;
- ✓ High-efficiency electronic pump on primary circuit
- ✓ High-efficiency electronic pump for DHW storage charging
- ✓ Fully wired height-adjustable electrical control panel connected to pumps, servomotors and probes equipped with an electronic controller with graphic display; anti-legionella function;
- ✓ Self-supporting structure.
- ✓ Insulation on pipes and fittings (standard), heat exchanger insulation (optional)
- ✓ Motorised three-way mixing valve (optional)

EPS units are also available in the following versions:

- ✓ 1P+1P: Semi-rapid heater with single circulator on primary and secondary circuit
- ✓ 0+1P: semi-rapid heater with single circulator on secondary circuit

If there is no pump on the primary, the mixer kit cannot be installed.

In summary, the main advantages of the EPS group are as follows:

- ✓ Very compact monoblock with small control cabinet dimensions;
- ✓ Easy maintenance due to easy access to used components;
- ✓ Easy installation;
- ✓ Possibility of increasing power by adding plates to the heat exchanger;
- ✓ Swivelling control panel for easy operation.

 **Start-up** : first start-up recommended. Quotation on request



Primary circuit		Secondary circuit	
temperature max.	pressure max.	temperature max.	pressure max.
95°C	10 bar	90°C	10 bar

DHW Semi-Instantaneous Systems EPS



PRICES

ACCESSORIES
PRICES

Codes and Prices

Vers.	Size	Code	Price	With packaging	
				Dimensions cm	Weight kg
1P+1P	55	342010050X	4.905,00 €	100x65x110	68
	100	342010052X	5.070,00 €	100x65x110	71
	150	342010120X	5.195,00 €	100x65x110	73
	240	342010054X	5.287,00 €	100x65x110	78
	330	342010122X	9.247,00 €	100x65x110	83
	500	342010059X	12.222,00 €	100x65x150	231
	600	342010061X	12.463,00 €	100x65x150	236
	700	342010063X	12.986,00 €	100x65x150	252
OP+1P	55	342010140X	3.961,00 €	100x65x110	65
	100	342010142X	4.122,00 €	100x65x110	68
	150	342010143X	4.141,00 €	100x65x110	70
	240	342010146X	4.382,00 €	100x65x110	75
	330	342010148X	6.795,00 €	100x65x110	80
	500	342010152X	9.569,00 €	100x65x150	217
	600	342010154X	9.818,00 €	100x65x150	222
	700	342010157X	10.332,00 €	100x65x150	238

Accessories

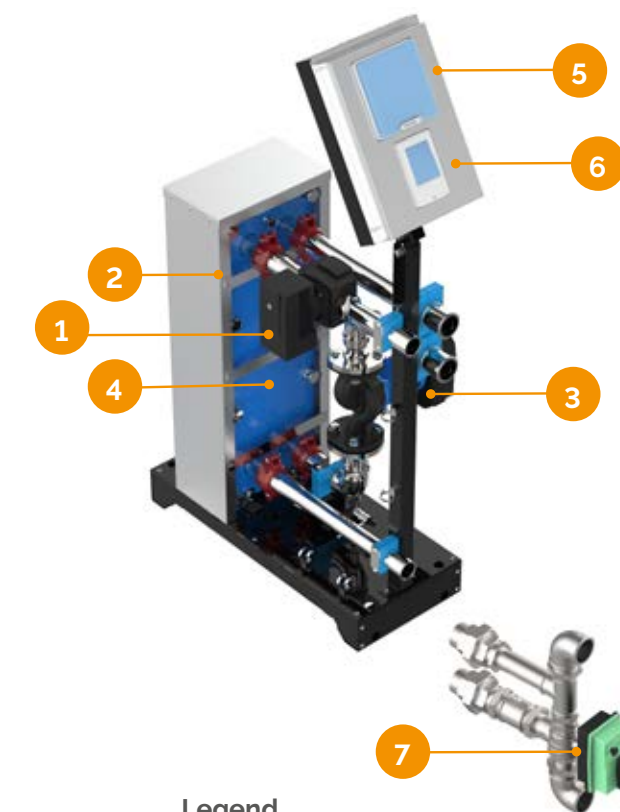
Description	Code	Price
3-way mixing valve EPS 55 - EPS 330	342040001X	833,00 €
3-way mixing valve EPS 500 - EPS 700	342040002X	1.684,00 €
Insulation EPS 55 - EPS 330	321080137X	265,00 €
Insulation EPS 500 - EPS 700	321080138X	346,00 €

NOTE: 3-way mixing valve cannot be used in case of OP+1P configuration

Features of the control unit

The HEIZERSILE EPS units are equipped with an electronic control panel to control and command the device, allowing them to

- ✓ Adjust the temperature set-point for different time slots;
- ✓ Adjust the speed of the DHW-side circulator to optimise the stratification of the DHW tank;
- ✓ Control the primary and secondary circuit pumps, stopping them if the set-point is reached;
- ✓ Schedule anti-legionella treatments by means of heat shock;
- ✓ Signal on screen when anti-legionella treatment is active;
- ✓ To have an error signal in the event of a unit malfunction;
- ✓ Control a DHW recirculation pump (pump not supplied).
- ✓ Compatibility with MULTIGATEWAY, the module for remote management see page 277



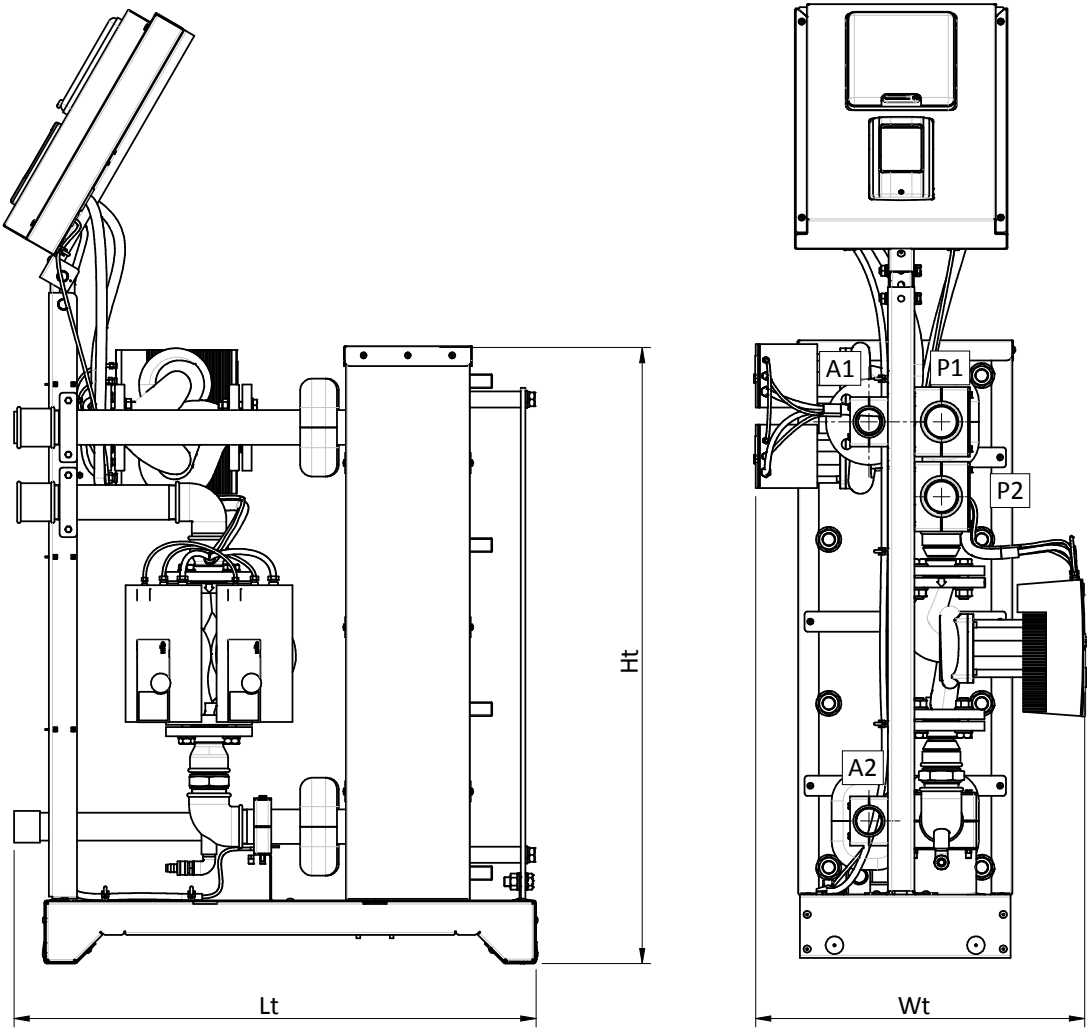
Legend

1	Plate heat exchanger
2	Heat exchanger insulation (optional)
3	Primary circuit pump
4	Secondary circuit pump (semi-instant version)
5	Electrical control and command panel
6	Regulator
7	Motorised three-way mixing valve (optional)



EPS

Components and Dimensions



Legend

A1	Domestic water inlet
A2	Domestic water outlet
P1	Output to energy source
P2	Input from energy source

Technical specifications

Version	Size	Ht mm	Lt mm	Wt mm	A1 mm	A2 mm	P1 mm	P2 mm	A1 inches	A2 inches	P1 inches	P2 inches
1P•1P	55-330	650	910	365	475	95	610	515	1'	1'	1'1/4	1'1/4
	500-700	1070	910	445	932	238	932	802	1'1/2	1'1/2	2'	2'
OP•1P	55-330	650	910	365	475	95	475	95	1'	1'	1'1/4	1'1/4
	500-700	1070	910	500	932	238	932	802	1'1/2	1'1/2	2'	2'

EPS performance

Rated output in kW under different temperature conditions

	Rated output in kW at different temperature conditions							
Primary input temperature	EPS 55				EPS 100			
°C	10-65 °C	10-60 °C	10-55 °C	10-45 °C	10-65 °C	10-60 °C	10-55 °C	10-45 °C
80	50	58	68	86	100	117	133	165
70	20	35	45	65	50	70	90	124
60	-	-	20	40	-	-	40	82
50	-	-	-	19	-	-	-	40

	Rated output in kW at different temperature conditions							
Primary input temperature	EPS 150				EPS 240			
°C	10-65 °C	10-60 °C	10-55 °C	10-45 °C	10-65 °C	10-60 °C	10-55 °C	10-45 °C
80	115	135	154	190	185	215	245	245
70	55	80	105	145	95	130	165	200
60	-	-	45	95	-	-	80	150
50	-	-	-	46	-	-	-	74

	Rated output in kW at different temperature conditions							
Primary input temperature	EPS 330				EPS 500			
°C	10-65 °C	10-60 °C	10-55 °C	10-45 °C	10-65 °C	10-60 °C	10-55 °C	10-45 °C
80	250	295	330	380	365	438	500	500
70	130	180	225	300	180	255	333	450
60	-	-	110	190	-	-	158	290
50	-	-	-	103	-	-	-	144

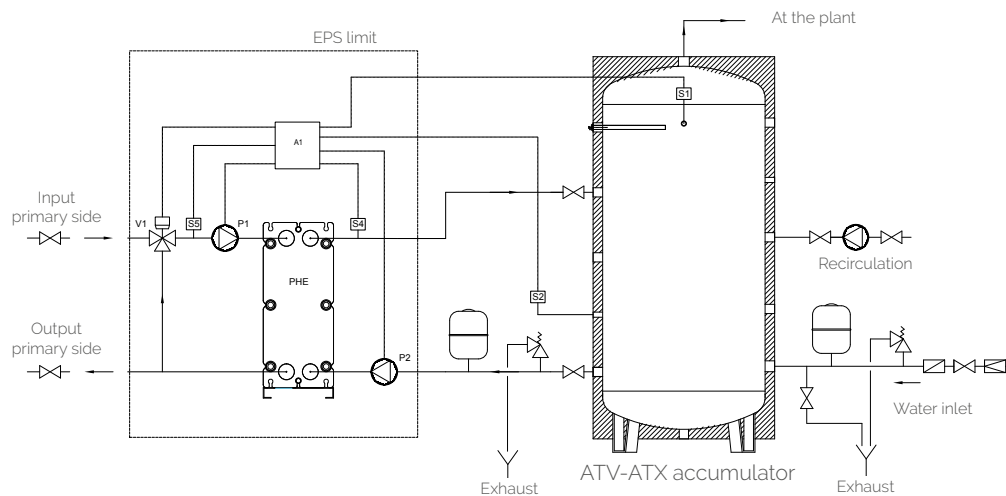
	Rated output in kW at different temperature conditions							
Primary input temperature	EPS 600				EPS 700			
°C	10-65 °C	10-60 °C	10-55 °C	10-45 °C	10-65 °C	10-60 °C	10-55 °C	10-45 °C
80	452	540	613	650	560	665	740	740
70	225	330	412	560	330	410	505	620
60	-	-	185	371	-	-	280	430
50	-	-	-	176	-	-	-	255

Installation diagrams

1P+1P version

Legend

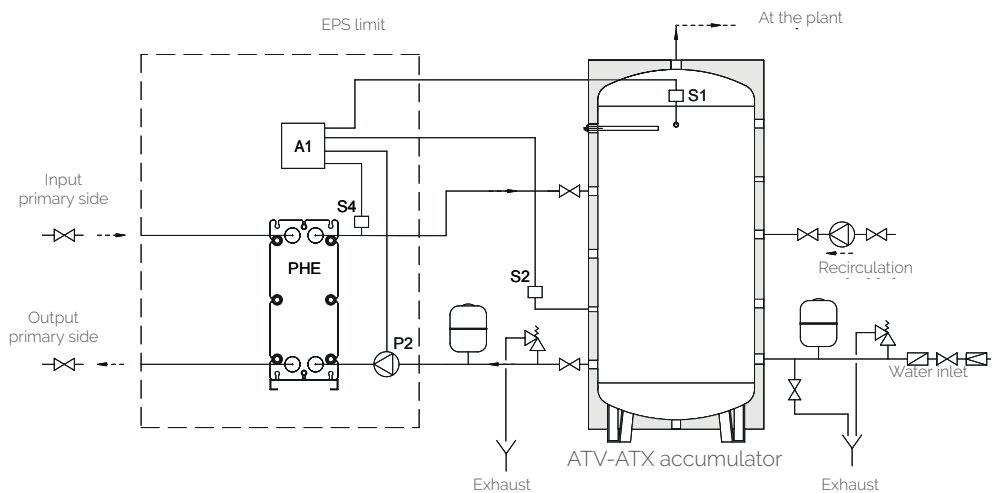
PHE	Plate heat exchanger
P1	Primary side pump
P2	Secondary-side pump
V1	3-way mixing valve (optional)
S1	Temperature sensor (supplied disassembled)
S2	Temperature sensor (optional)
S4	Temperature sensor
S5	Temperature sensor (optional together with V1)



OP+1P version

Legend

PHE	Plate heat exchanger
P2	Secondary-side pump
S1	Temperature sensor (supplied disassembled)
S2	Temperature sensor (optional)
S4	Temperature sensor



Installation and use

Install the product on a flat surface suitable for supporting the weight of the product and its contents (see rating plate with technical specifications). Make the connections of the outward and return pipes of the circuits so that they do not weigh on the product and allow access and disassembly of any accessories. Equip the installation with a safety valve with adequate working pressure in accordance with Directive 97/23/EC and with a suitable orifice diameter. With the presence of storage tanks, equip the installation or the tank with expansion vessels that comply with Directive 97/23/EC, with a maximum service pressure that is not less than that of the storage tank itself and with a capacity that is adequate for the volume and temperatures of the installation in order to protect the latter from over-pressure. The electrical connections must be carried out by authorised personnel and in compliance with the regulations in force.

Maintenance

For the correct use of EPS heat exchanger units, it is recommended:

ommended:

- A periodic check of the water hardness values, which must be between 10 and 15° F
- A periodic check of the operation of the installation's safety valve;
- A periodic check of the charge pressure of the expansion vessels;
- A periodic check for leaks;
- Periodic cleaning of the heat exchanger using commercially available solutions (consult us for more information);
- A periodic anti-legionella heat treatment to disinfect the installation

ATTENTION

Disconnect the heat exchanger from the installation before carrying out electrical welding on the installation piping.

CE marking

The product, in accordance with specific EU directives, bears the CE mark.

Wenkel S.r.l

Registered and operating office: Via E. Mattei 13/F – 31030 Casier (TV) – P.I. e C.F. 08456530966 – REA: TV-422447

Registered with the Companies' Register of Treviso-Belluno under No. 08456530966 – Share Capital €98.000,00

Tel. 0422/672911 • Fax 0422/340425 • e-mail: info@heizersile.it • www.heizersile.com

Subject to control and coordination by Fiorini Industries S.r.l.

