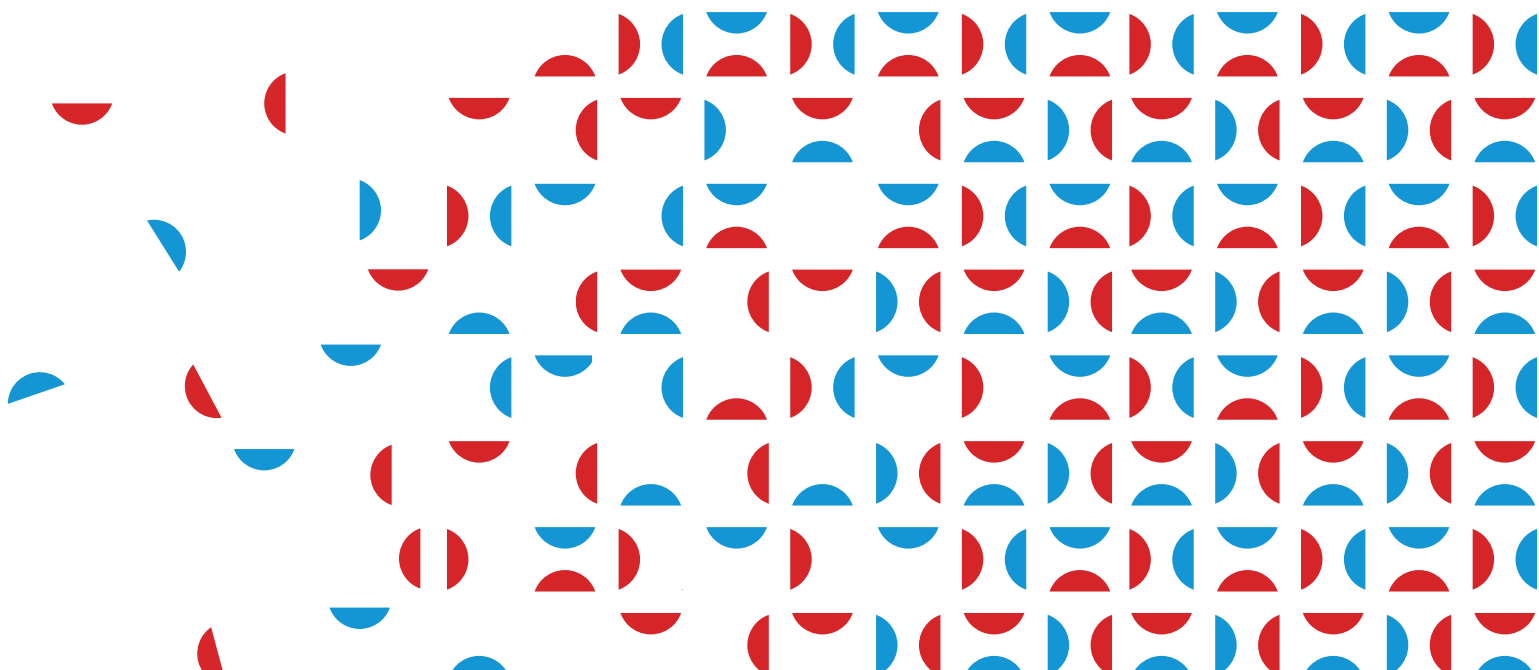


GAS AND ELECTRIC WATER HEATERS

HEAT PUMPS FOR DHW PRODUCTION

HP GREEN



Heat pumps for DHW production

HP GREEN and HP GREEN MINI



PRICES

The Heat Pump water heater range was created with energy saving in mind for households. Unlike a conventional water heater, heat pump water heaters provide hot water from the heat in the air, thus saving on electricity costs.

The electrical energy used by the system is only that required for compressor and fan operation. Heating elements are only switched on if really necessary or if requested by the user (with the Boost function).

Internal protective treatment: glass lined coating

Insulation: 50 mm polyurethane foam

High efficiency and savings

- COP up to 3,2 for HP GREEN MINI models; 3,56 for HP GREEN 250S
- More possibilities of energy sources
- High-performance compressor
- Micro-Channel Capacitor
- Possibility of programming operation according to time slots or remote on/off contact
- ECO mode: Hot water production with heat pump operation priority
- HOLIDAY mode: The heat pump stops working during the set holiday period. It switches on the day before the end of the period in AUTO mode to prepare hot water for the return home.

Installation: HP GREEN 250S is free-standing; HP GREEN Mini models are wall-mounted and come complete with mounting bracket. Possibility of ducting intake/outlet to use ambient or external air.

Plus: An additional coil at the bottom of the tank increases the exchange area and improves efficiency, reducing heating times

Programming: The water heater control allows operation to be inhibited during user-programmed periods (e.g. when energy costs are high). Heat pump operation can be maximised! With a digital control, the set point can be raised to 65 °C. Programming allows the selection of simultaneous operation of compressor and heater or just one of the two.

Anti-legionella function: Automatically the water is heated to 65°C, every seven days, to eliminate any bacteria that may form in the tank.

Auxiliary coil exchanger: for HP GREEN 250S, a coil exchanger for external auxiliary heating source (solar/boiler) is included.



Codes/Prices **Start-up:** first start-up recommended.

Model	Code	Price
HP GREEN MINI 80	344020019X	1.627,00 €
HP GREEN MINI 110	344020020X	1.819,00 €
HP GREEN 250S	344020018X	2.933,00 €

Heat pumps for DHW production

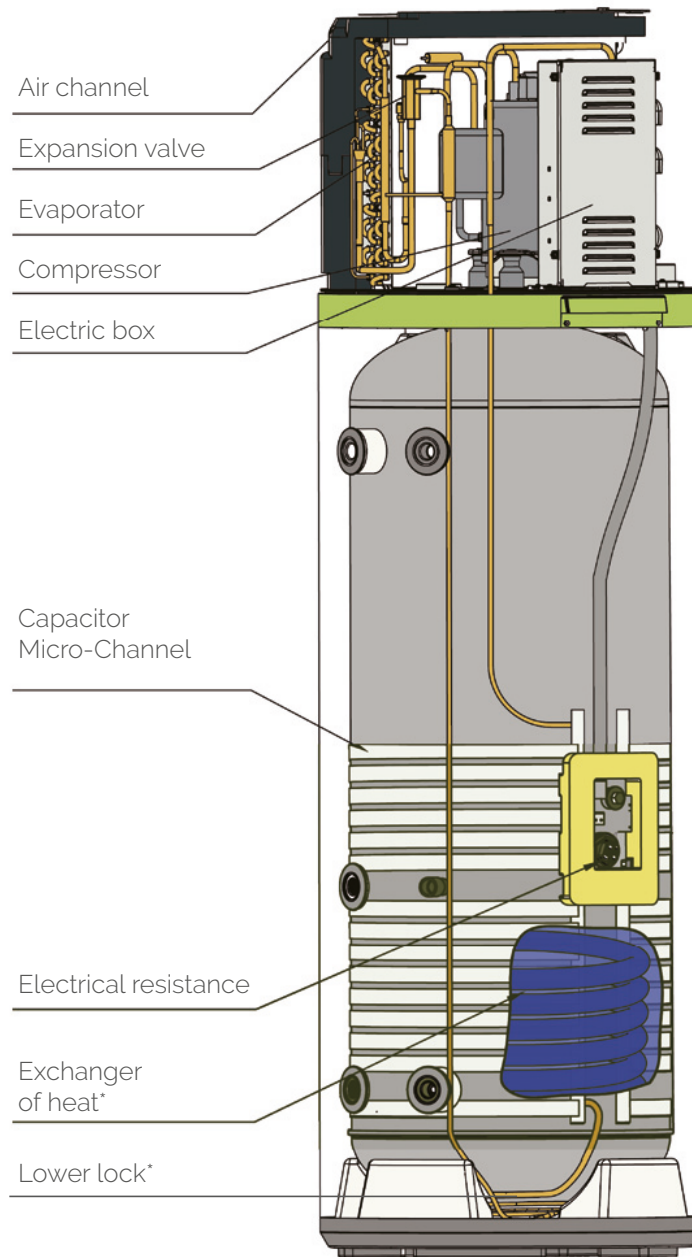
HP GREEN and HP GREEN MINI

Tank	U.M.	HP GREEN MINI 80	HP GREEN MINI 110	HP GREEN 250S
Installation		Wall cabinet	Wall cabinet	Floor
Tank volume	l	80	110	240
Power supply	V-Hz	220-240V/50Hz	220-240V/50Hz	220-240V/50Hz
Tank pressure	bar	8	8	7
Extra coil exchange surface	m ²	-	-	1
Anti-corrosion magnesium anode	n.	1	1	2
IP protection class		IPX4	IPX4	IPX4
System data				
Auxiliary heating element power	W	1200	1200	1500
Average power input (heat pump only)	W	240	240	495
Maximum power input (heat pump only)	W	350	350	865
Maximum power consumption (with electrical resistance)	W	1550	1550	2365
Default water temperature	°C	55	55	55
Water temperature range with heating element	°C	35÷75	35÷75	35÷75
Water temperature range heat pump only	°C	35÷65	35÷75	35÷65
Coolant	Type/Q.ty	R134a / 0.45 kg	R134a / 0.45 kg	kg R134a / 0.9
Maximum refrigerant circuit pressure (suction/discharge)	Mpa	0.8/2.8	0.8/2.8	0,2 / 2.8
Ozone Removal Potential (ODP)		0	0	0
Global Warming Potential (GWP)		1430	1430	1430
Sound power	dB(A)	50	50	59
Sound pressure level at 2 m in free field	dB(A)	36	36	43
Operating temperature	min-max °C	-7÷45	-7÷45	-7÷45
Performance				
Type of extraction		Environment / Exterior	Environment / Exterior	Environment / Exterior
COP@7°C (EN16147)		2,71	2,64	3,1
COP@14°C (EN16147)		3,17	3,2	3,56
Warm-up time (@7°C)	h	4 h 58 min	6 h 35 min	6 h 55 min
Heating time (@14°C)	h	4 h 09 min	5 h 23 min	6 h
Tapping cycle (EN16147)		M	M	L
Standby power consumption / Pes (@7°C)	W	20	20	27
Maximum usable hot water volume (EN16147) V40	l	102,5	135,5	303
Energy efficiency class (ERP)		A+	A+	A+
Dimensions and connections				
Water outlet	inches	G1/2 "M	G1/2 "M	G3/4 "F
Water inlet / Condensate drain	inches	G1/2 "M	G1/2 "M	G3/4 "F
Safety valve	inches	G1/2 "M	G1/2 "M	G3/4 "F
Ducting hole diameter for air intake/air delivery	mm	Ø 160	Ø 160	Ø 180
Maximum air duct length (total intake and exhaust)	m	5	5	5
Water heater dimensions (WxDxH)	mm	492x537x1170	492x537x1320	600x629x1987
Packaging dimensions (WxDxH)	mm	-	-	736x695x2250
Packaging dimensions without pallet (WxDxH)	mm	587x587x1247	587x587x1397	736x695x2120
Gross weight	kg	59	63	132
Net weight	kg	51	55	119

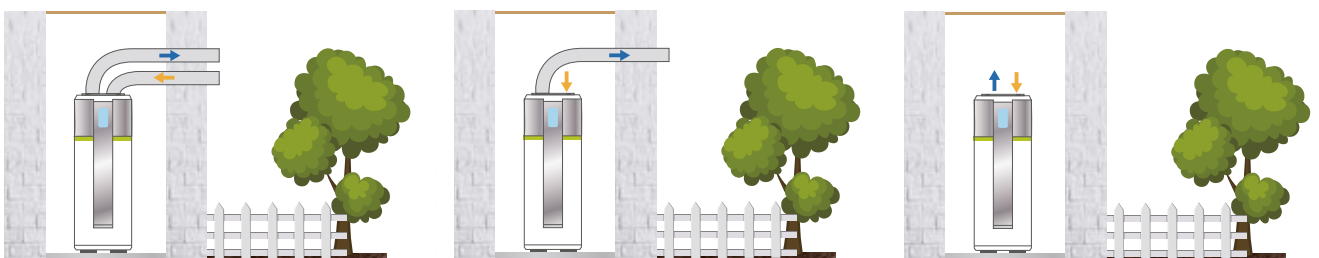
Conto Termico: The ministerial decree of 28/12/2012 implemented the so-called 'Conto Termico'. A specific support scheme for small-scale interventions for the production of thermal energy from renewable sources and the increase of energy efficiency. The replacement of electric water heaters with HP GREEN allows access to important incentives lasting 2 years. For information and details see www.gse.it.

Heat pumps for DHW production

HP GREEN and HP GREEN MINI

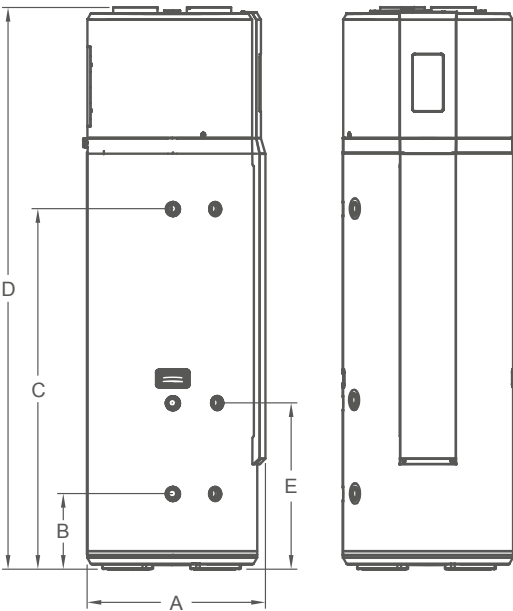


*only included on HP GREEN 250S



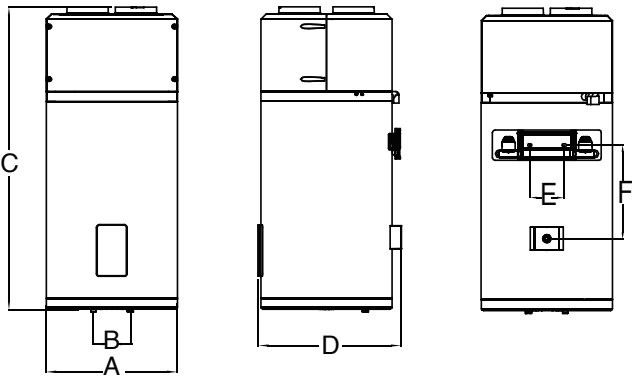
Heat pumps for DHW production

HP GREEN and HP GREEN MINI



Model	A mm	B mm	C mm	D mm	E mm
HP GREEN 250S	629	270	1275	1987	590

Ducting hole diameter
for air intake/air outlet Ø 180mm



Model	A mm	B mm	C mm	D mm	E mm	F mm
HP GREEN Mini 80	492	140	1170	537	159	362
HP GREEN Mini 100	492	140	1320	537	159	362

Wenkel S.r.l

Registered and operating office: Via E. Mattei 13/F – 31030 Casier (TV) – P.I. e C.F. 08456530966 – REA: TV-422447

Registered with the Companies' Register of Treviso-Belluno under No. 08456530966 – Share Capital €98.000,00

Tel. 0422/672911 • Fax 0422/340425 • e-mail: info@heizersile.it • www.heizersile.com

Subject to control and coordination by Fiorini Industries S.r.l.

