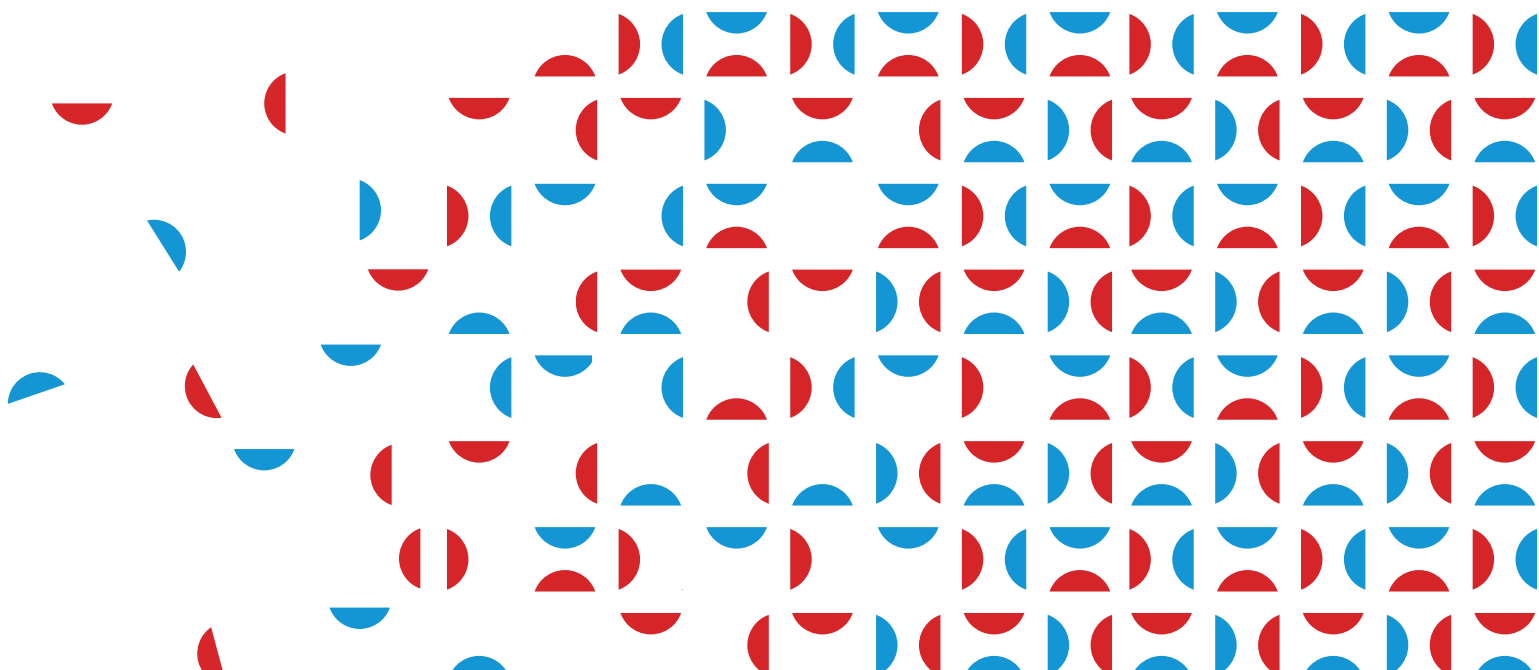


STEAM GENERATORS

MEDIUM PRESSURE STEAM GENERATORS

PVM M.P.



Medium pressure steam generators

PVM M.P. 8 bar - 175.4° C

PVM M.P. 12 bar - 191.5° C



PRICES



Monoblock medium pressure steam generators with three effective smoke passes.

Monoblock pressurised generators for steam production with three smoke passes, two of which in smooth tube bundles. Factory tested and verified by Notified Body as "ASSEMBLY" certified according to European Directive 2014/68/EU-PED. Complete with all accessories (except burner) ready for operation. Already prepared for 24/72 hour KIT installation. Running on gas, diesel, fuel oil.

Max. allowed pressure 8 bar - Max. allowed temperature 175.4° C.

Max. allowed pressure 12 bar - Max. allowed temperature 191.5° C.

Generator subject to Declaration of Commissioning.



Standard accessories (included in delivery)

- Insulated aluminium sheet casing with satin finish
- Stainless steel turbulators
- Start-up steam valve
- No. 2 safety probes
- Probe level regulator
- No. 2 spring-loaded safety valves
- Bleeding unit (flow valve started + ball valve unloaded)
- No. 2 service pressure switches
- Safety pressure switch
- Dial gauge with three-way shut-off valve
- N.2 Visual reflection level indicators complete with taps
- interception and purging
- Electric feed pump with start-up flow valve (no. 1 valve if only one pump present and No. 3 if with two pumps) and non-return valve
- General electrical control panel for automatic operation
- of the generator
- Counterflanges on hydraulic connections
- Burner pad drilling

Accessories on request

- Gas, oil or naphtha burner
- 2nd electric supply pump

- Stainless steel mantle
- Steam injector with no. 2 flow-through valves
- Automatic sludge purge unit
- Automatic bleeding unit + TDS control
- Control panel with 'Valiantec' control unit
- Rapid lever degassing valve
- Circulator for condensate temperature >70°C (Su/oni 140÷1000)
- Circulator for condensate temperature >70°C (Su/on 1250÷5000)
- Vertical steel (or AISI 304 stainless steel) condensate drain pan
- Accessory kit for 24/72 hour service
- Flue thermostat

Note: Please specify the available voltage and the expected fuel when ordering.

Codes and specifications: prices on request

Model	Pressure	Code	Useful power	Production of steam with feed water 70°C	Overall dimensions			Weight empty	Pressure chamber combustion	Total water content	Connection chimney	Connection steam	Exhaust
	bar		kW	kg/h	H mm	P mm	L mm	kg	m	dm3	mm	DN	DN
PVM 1000	8	10301820650	697	1000	2135	3310	2395	5200	2,5	3475	300	50	25
	12	10301820650											
PVM 2000	8	10301821200	1386	2000	2360	35390	2590	6900	6	4600	350	80	40
	12	10301841200											
PVM 3000	8	10301821800	2035	3000	2355	4100	2690	8500	11,5	5450	400	80	40
	12	10301841800											
PVM 4000	8	10301822500	2769	4000	2555	4850	2790	10200	12	6720	450	100	40
	12	10301842500											

Wenkel S.r.l

Registered and operating office: Via E. Mattei 13/F – 31030 Casier (TV) – P.I. e C.F. 08456530966 – REA: TV-422447

Registered with the Companies' Register of Treviso-Belluno under No. 08456530966 – Share Capital €98.000,00

Tel. 0422/672911 • Fax 0422/340425 • e-mail: info@heizersile.it • www.heizersile.com

Subject to control and coordination by Fiorini Industries S.r.l.

