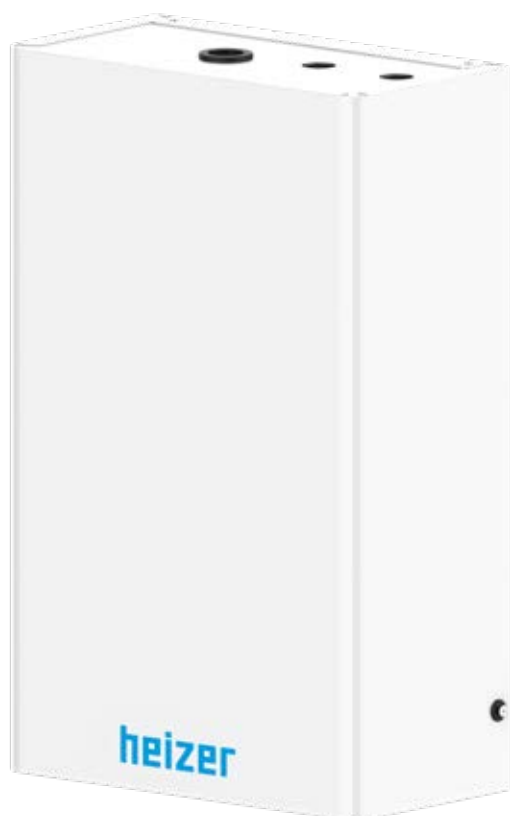


# DHW SYSTEMS

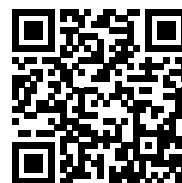
DHW INSTANTANEOUS SYSTEMS

T-QUICK



# DHW Instantaneous systems

## T-QUICK



PRICES

The **T-QUICK** is an instantaneous domestic hot water production module using a brazed stainless steel plate heat exchanger.

The domestic hot water **temperature** is **regulated** by means of a **three-way** thermostatic mixing **valve** installed on the primary circuit (thermal storage side).

The module, connected to a thermal storage tank from which it draws energy, is complete with all the components necessary for its operation: a pump on the primary circuit operated by a flow switch positioned on the inlet of the DHW circuit, a mixing valve operated by a **thermostatic actuator**, which allows the user to keep the set DHW temperature constant.

For maximum user comfort, accessories are available for hot water **recirculation** management that can be combined with each other or used individually according to one's needs.

### Plus

- ✓ Compact hanging module
- ✓ Precise hot water temperature control
- ✓ Pre-painted sheet metal casing
- ✓ Closed-cell polyethylene foam insulation insulating the entire hydraulics
- ✓ Domestic hot water circuit in STAINLESS STEEL
- ✓ Provision for internal installation of recirculation kit
- ✓ Shut-off valves on each connection
- ✓ Integrated safety valve on the DHW circuit
- ✓ Easy Plug and Play installation
- ✓ Simple and economical use

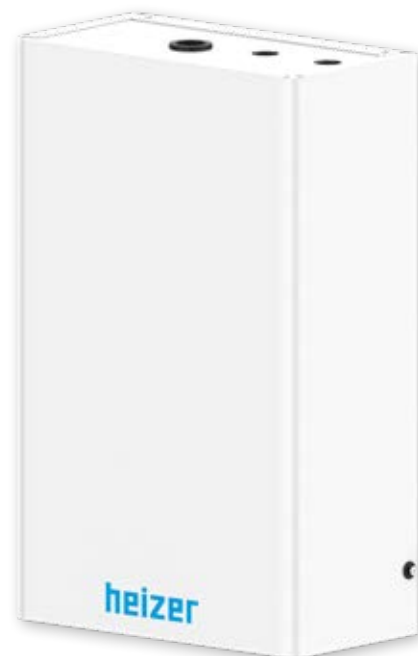
### Main Features

Here are the main features:

- ✓ Very simple factory setting: the QUICK point is set using a knob to select the desired DHW usage temperature
- ✓ A mechanical stop on the valve allows the maximum SET POINT temperature to be set by the user

#### Accessories available from page 254

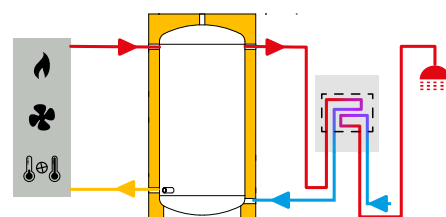
Start-up : first start-up recommended.



TESTED



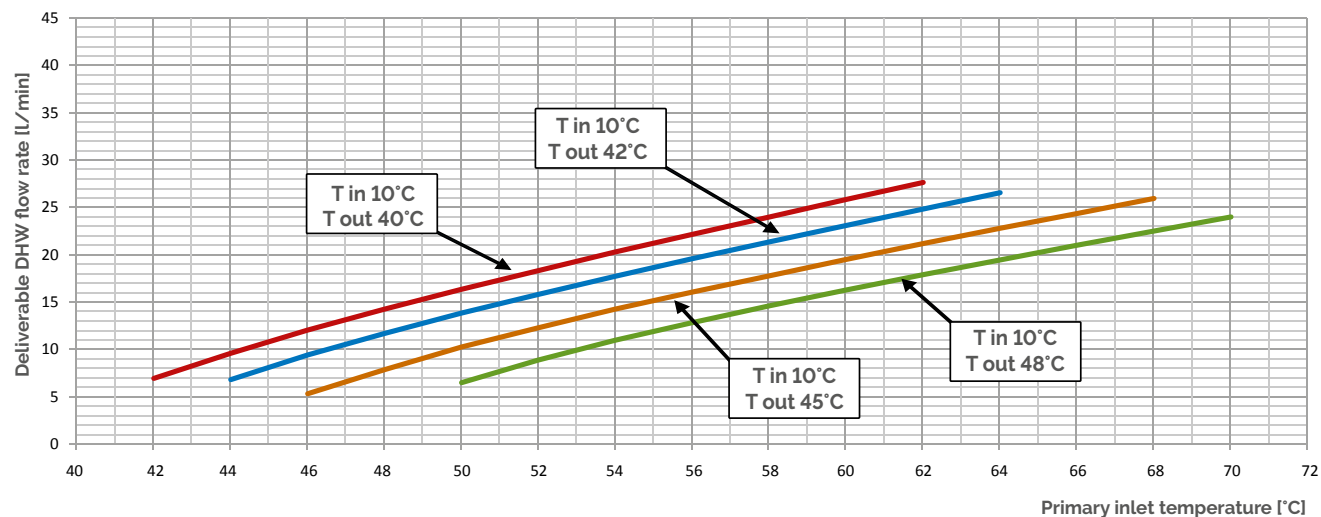
Model	DHW nominal flow rate	Code	Price	With packaging	
				Dimensions cm	Weight kg
T-QUICK 20	(20 l/minute DHW)	342030152X	1.597,00 €	63x40x21	19
T-QUICK 30	(30 l/minute DHW)	342030153X	1.650,00 €	63x40x21	20



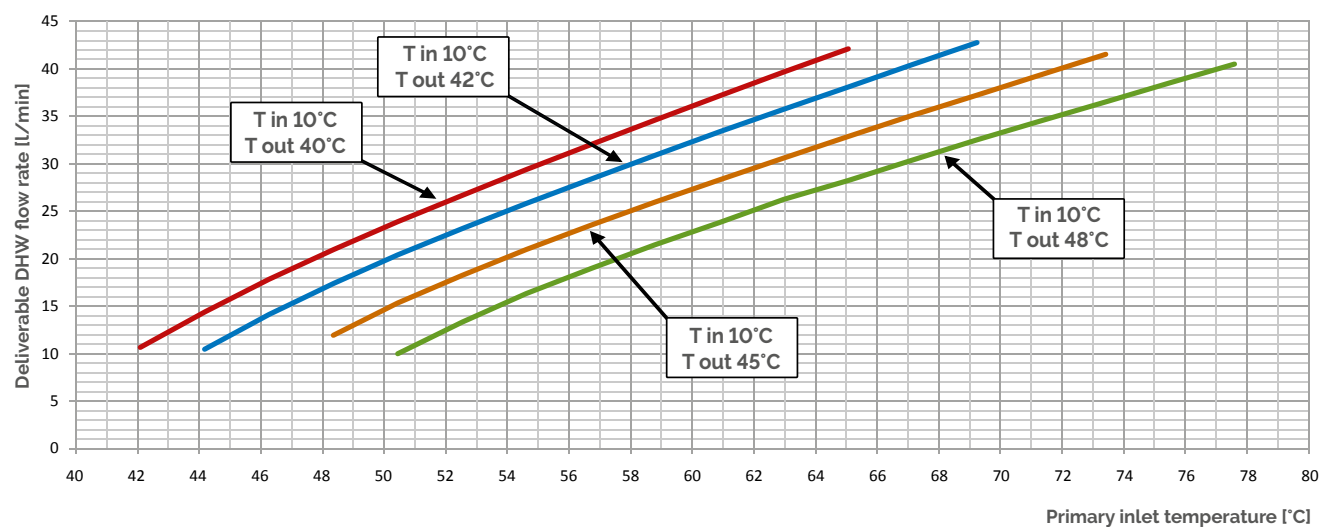
# T-QUICK

## Thermal performance

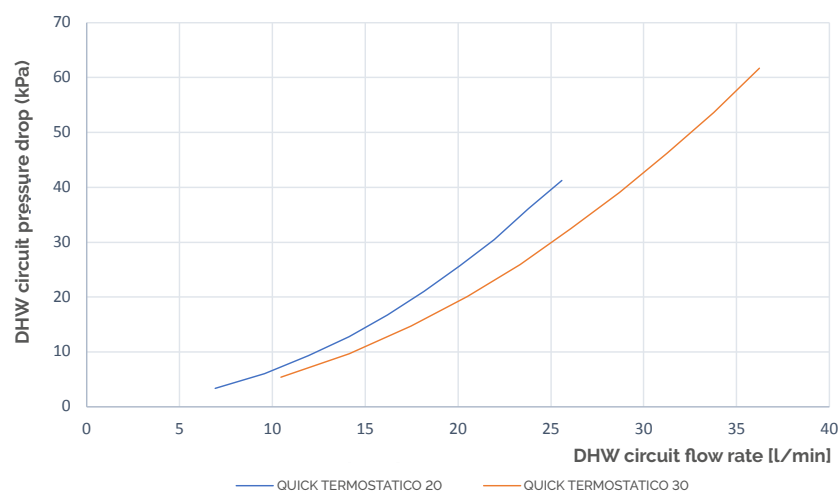
Thermal performance T-QUICK 20



Thermal performance T-QUICK 30

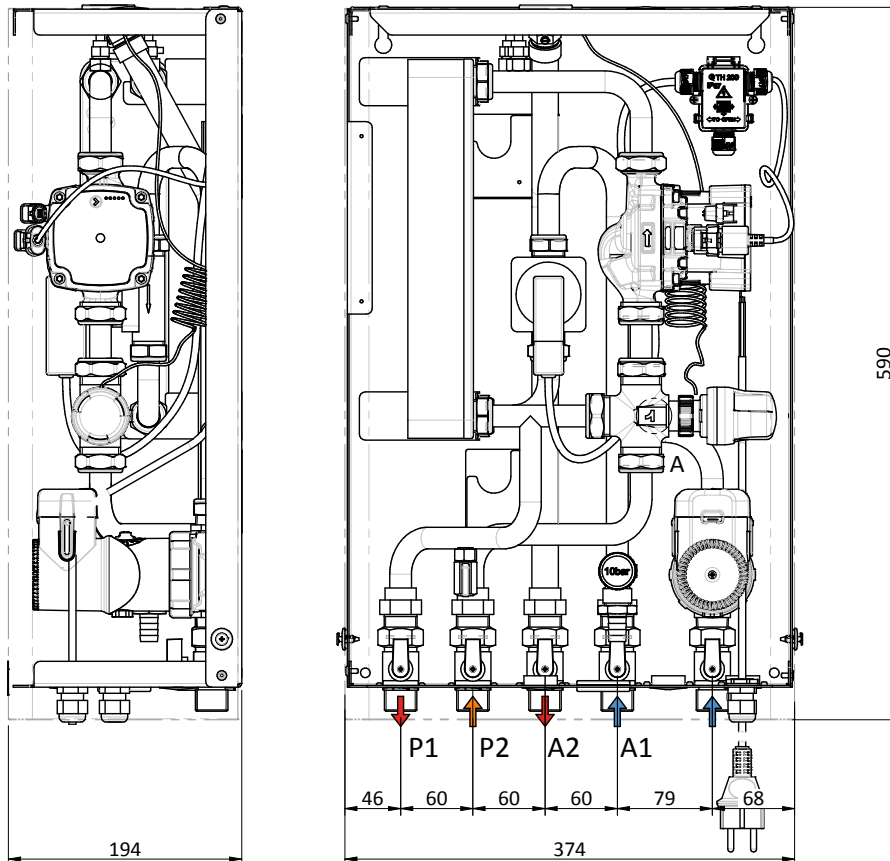


## Hydraulic performance



# T-QUICK

## Dimensions



### Legend

A1	DHW input
A2	DHW output
P1	Output to energy source
P2	Input from energy source

## Technical Data Table

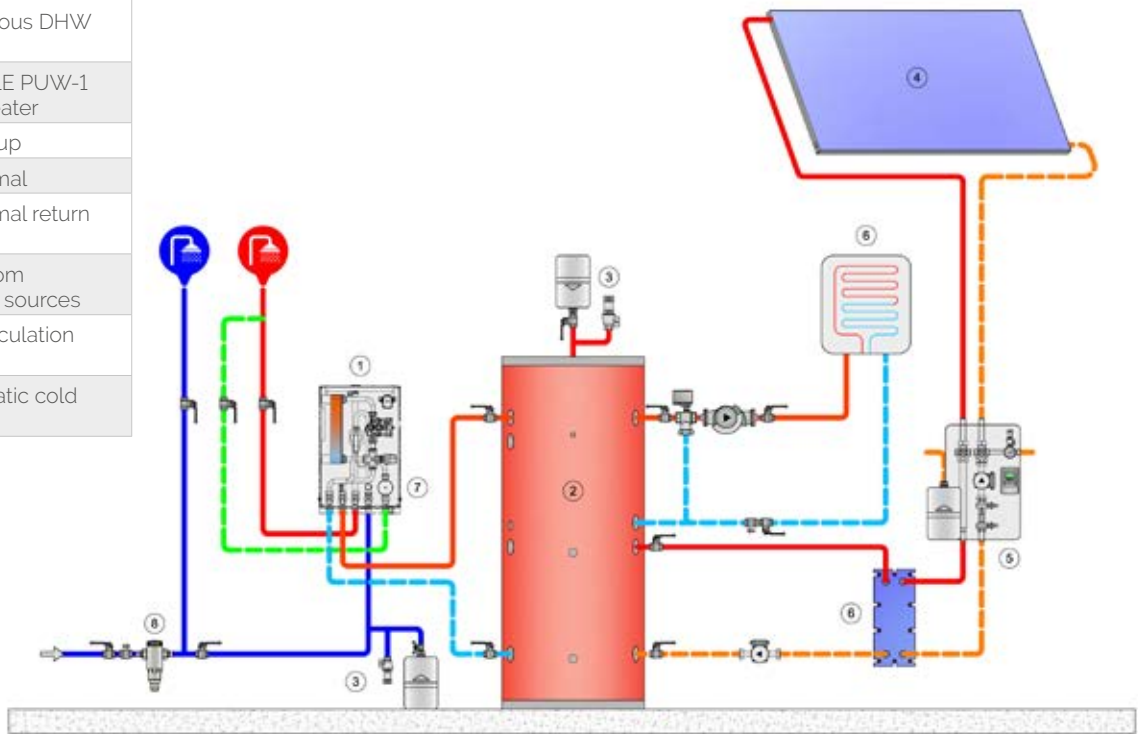
		T-QUICK 20	T-QUICK 30
Power supply	V/Ph/Hz	230/1/50	
Primary pump power min/max	W	10-75	
Primary pump absorption min/max	A	0,03-0,66	
Maximum power recirculation pump system manageable by the control unit	W	460	
Primary flow rate	l/h	1500	1600
Residual headroom primary circuit	m.c.a.	1,5	
Weight without packaging/with packaging	kg	18/19	19/20
Primary circuit volume	l	0,7	1
DHW circuit volume	l	0,6	0,9
Maximum operating pressure primary circuit	bar	5	
Max. operating pressure DHW circuit		10	
Primary circuit connections	inches	UNI ISO 228/1 - G 3/4	
Secondary circuit connections	inches	UNI ISO 228/1 - G 3/4	
Maximum operating temperature	°C	95	
Electrical protection class		IP40	
Electrical connection plug type		SCHUKO 10-16A/250V	
Electrical cable length	m	1,5	
Minimum ignition flow rate DHW	l/min	2	
Dimensions (HtxLtxWt)	mm	590X374X194	

# T-QUICK

## Installation diagram in combination with thermal storage

### Legend

1	T-QUICK instantaneous DHW heater
2	HEIZERSILE PUW-1 storage heater
3	Safety group
4	Solar thermal
5	Solar thermal return unit
6	Heating from alternative sources
7	DHW recirculation pumps
8	Bacteriostatic cold water filter



Note: An expansion tank must be installed on the cold water line

## Standard equipment

The T-QUICK Instant Heater is delivered in a cardboard box and comes complete with:

- ✓ Instantaneous preparation complete with electrical cable with Schuko socket
- ✓ Jig for easy preparation of holes in the wall on which to anchor the instant heater
- ✓ Dowels and gates for fixing the instant mixer to the wall
- ✓ Operation and Maintenance Manual

# T-QUICK

## Accessories on request



ACCESSORIES  
PRICES

The T-QUICK can be integrated with three accessories to manage recirculation. Recirculation increases end-user comfort by immediately obtaining hot water when the tap is opened without having to waste cold water. Three accessory codes are available:

1. the recirculation kit consisting of circulator, valves and instructions (can be integrated within the T-QUICK),
2. the recirculation control unit consisting of electronic board and 2 PT 1000 probes, one contact and one immersion
3. a PT 1000 contact probe for the recirculation loop

These three accessories leave maximum freedom of choice to the installer, who can for example purchase the recirculation kit coupled to the controller, or can purchase the recirculation kit coupled to the probe to freely decide how to manage the kit. The T-QUICK recirculation kit (1) is not supplied with a probe because it is left to the installer to decide how to manage the pump: if there is a need to control the circulator by means of an electronic solution, it is possible to purchase the recirculation control unit (already equipped with probes) (2) or possibly just the recirculation probe (3).

### (1) T-QUICK recirculation kit

The recirculation kit can be integrated inside the T-QUICK body thanks to the hydraulic fittings. The kit is supplied separately, not assembled and includes:

- ✓ Recirculation pump
- ✓ Shut-off valve
- ✓ Check valve
- ✓ Instructions

NB: The temperature probe is not supplied with this kit. The Kit is designed to be easily installed inside the unit. In order to obtain the Complete Recirculation Kit and optimise consumption, it is advisable to combine **the Recirculation Kit with the accessory Recirculation Kit Probe** and prepare a panel with thermostat (and/or timer).

### (2) Control unit for recirculation kit

The kit is supplied separately, not assembled and includes:

- ✓ DC control unit
- ✓ 1 PT1000 immersion temperature probe for installation at the top of the tank
- ✓ 1 PT1000 contact temperature probe to be placed on the recirculation loop
- ✓ Education

NB: Purchasing the control unit kit does not require the probes to be purchased separately.

### (3) Probe for recirculation kit

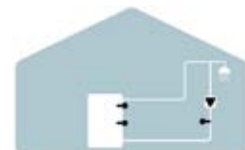
The kit is supplied separately, not assembled and includes:

- ✓ PT1000 temperature probe to be placed on the recirculation loop
- ✓ Instructions

NB: The recirculation pump is not supplied with this kit.

The provision for its mounting is however present inside the T-QUICK heater.

By purchasing the control unit kit, it is not necessary to purchase probes separately.



## Accessory codes and prices

Description	Code	Price
T-QUICK RECIRCULATION KIT	342040003X	589,00 €
T-QUICK/QUICK EXTERNAL RECIRCULATION KIT (NO PUMP)	342040009X	65,00 €
DC CONTROL UNIT - FOR DHW RECIRCULATION	C22120034	278,00 €

## **Wenkel S.r.l**

Registered and operating office: Via E. Mattei 13/F – 31030 Casier (TV) – P.I. e C.F. 08456530966 – REA: TV-422447

Registered with the Companies' Register of Treviso-Belluno under No. 08456530966 – Share Capital €98.000,00

**Tel. 0422/672911 • Fax 0422/340425 • e-mail: [info@heizersile.it](mailto:info@heizersile.it) • [www.heizersile.com](http://www.heizersile.com)**

Subject to control and coordination by Fiorini Industries S.r.l.

