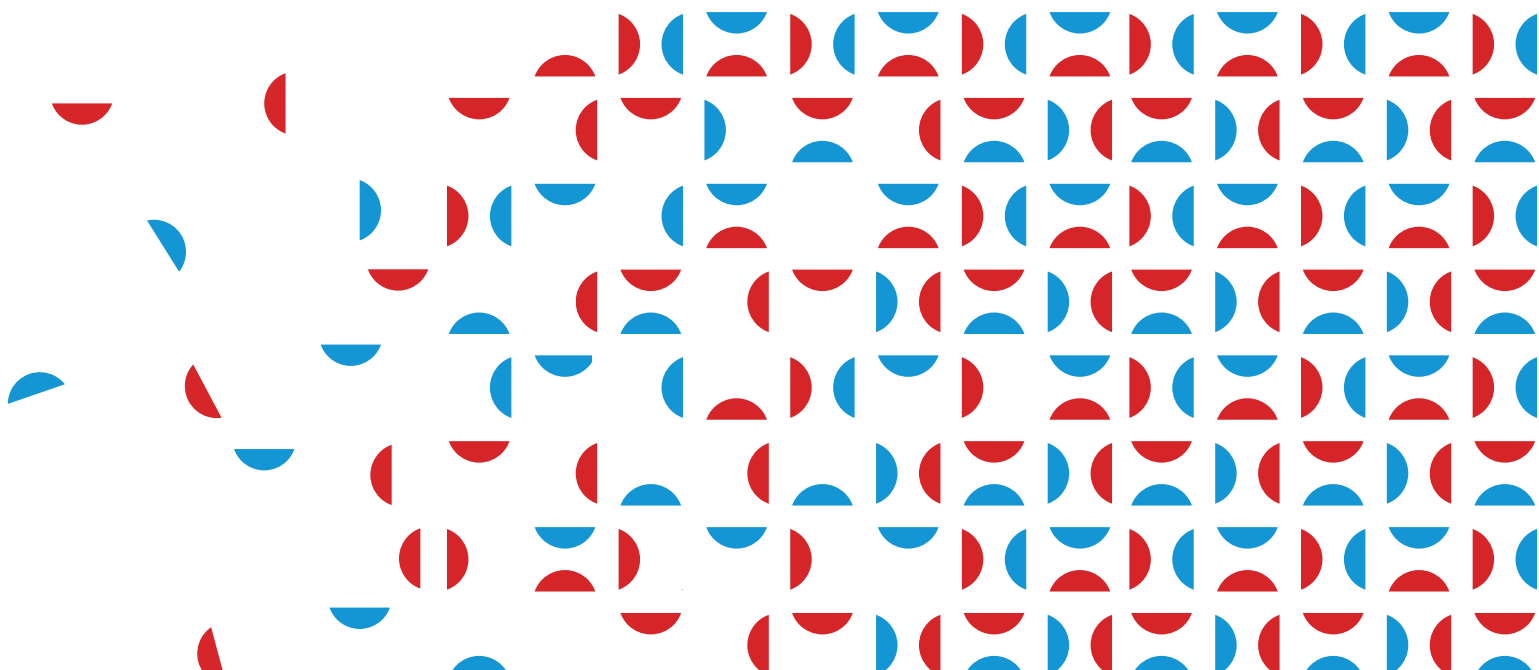
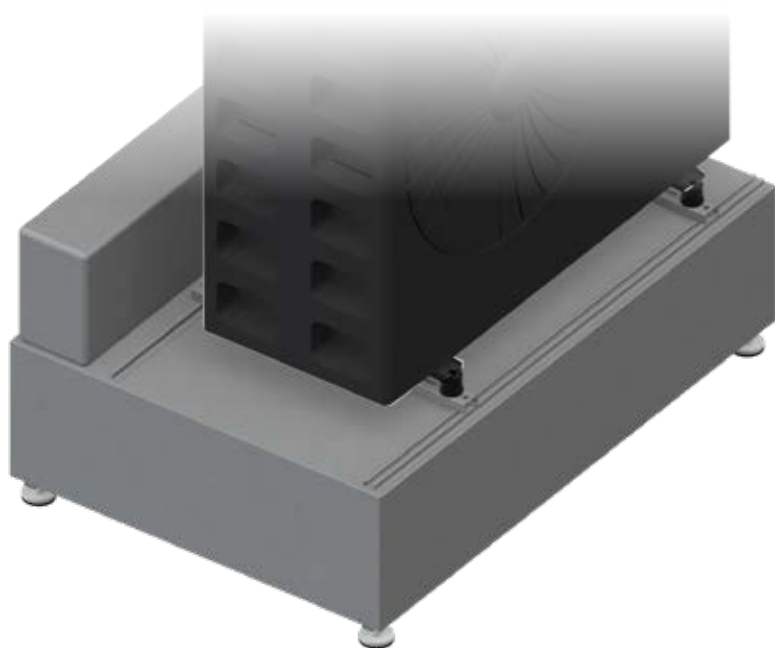


BUFFER TANKS

HEATING/COOLING WATER

ACR CH



Inertial storage WHP S

WHP S is the ultra-flat 50 litre mini storage tank that connects up to two energy sources (e.g. heat pump, boiler or other) and performs the functions of a hydraulic separator and distribution manifold for up to 2 zones. The internal diaphragm and the configuration of the secondary connections allow for proper fluid stratification. The dedicated heat pump connection (max. 4.5 m³/h) ensures full utilisation of the storage volume, promoting greater service continuity. If the connection of an additional energy source, such as a boiler, is not possible, WHP S is equipped with a connection for the connection of an electric heater (up to 3kW). The module is supplied with an automatic air vent valve and temperature thermowell. It is fully insulated and can be used in both heating and cooling systems.

Plus

- ✓ Compact module
- ✓ Fully insulated
- ✓ Suitable for hot/cold solutions
- ✓ Corrosion-resistant
- ✓ Low pressure drops, flow rate up to 4.5 m³/h
- ✓ Versatile: Deaerator, hydraulic separator / distribution manifold for up to 2 zones
- ✓ Installation symmetry (right/left high/low)
- ✓ Probe holder and automatic vent valve included
- ✓ Easy wall installation using special brackets;
- ✓ Predisposition for magnetic deflector
- ✓ Provision for electric resistance up to 3 kW
- ✓ Optional mixing unit
- ✓ Optional direct circulation unit

Collector material: S235 steel

Anticorrosive surface treatment: Cataphoresis


Insulation

Limit of use

Capacity (L)	Type
50	EPP 0.034 W/mk. 30g/L 40 mm thick

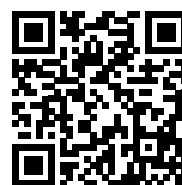
Min. temperature	Max. temperature	Max. pressure
-10 °C	100 °C	3 bar

Codes and prices

WHP S		With packaging		
Code	Price each	Class Energ.	Dim. cm	Weight kg
317010416X	1.007,00 €		100x56x27	31

Accessory codes and prices

	Code	Price each
KM3-125 YONOS PARA SC 25/1-6 MIXING GROUP	338110141X	695,00 €
KA-125 WILO YONOS PARA SC 25/1-6 CIRCULATION UNIT	338110142X	560,00 €
FITTING KIT 1" M / 1 1/2" F	C01040431	53,00 €
SERVO MOTOR SRVM ECOMIX 24V 0-10 / 2-10V 120S 5NM	C09020499	293,00 €
SRVM ECOMIX SERVOMOTOR 230V 3P 120s 5Nm	C09020500	149,00 €



PRICES



ACCESSORIES
PRICES



Mixing unit

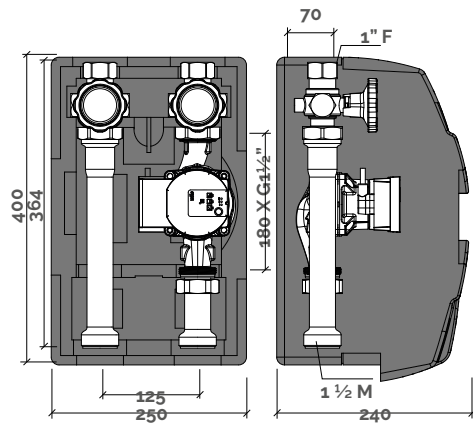
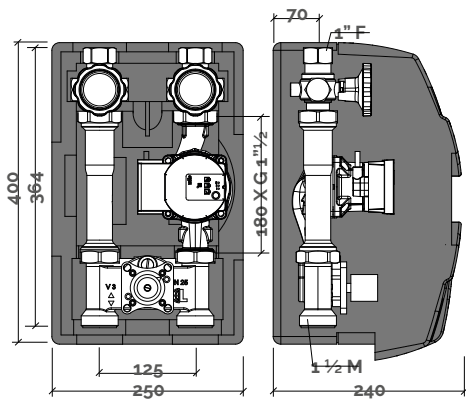
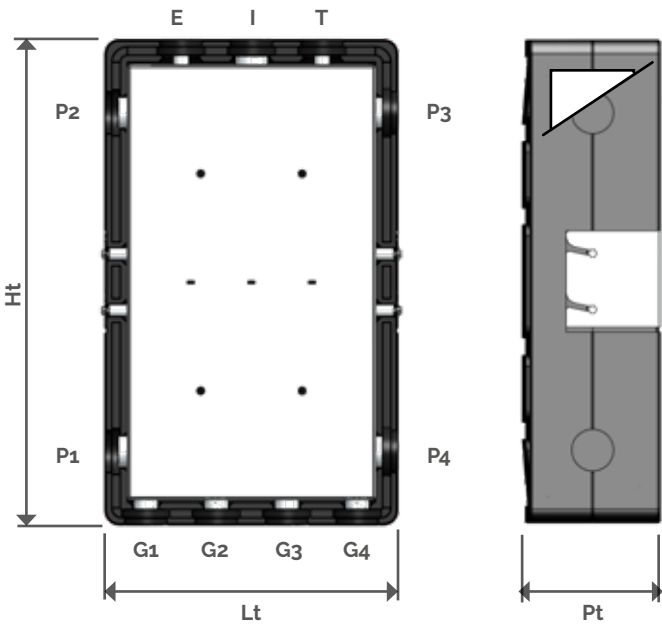
Direct
circulation
units

Inertial storage: Dimensions

WHP S

Connection legend

E	Temperature probe
G1	Input from plant
G2	Output to plant
G3	Input from plant
G4	Output to plant
I	Electrical resistance
P1	Output to energy source
P2	Input from energy source
P3	Output to energy source
P4	Input from energy source

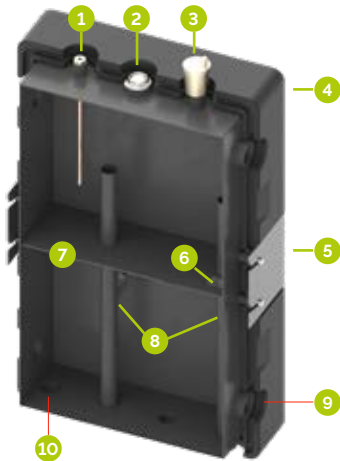


Connection table

Capacity L	E inches	I inches	G1 inches	G2 inches	G3 inches	G4 inches	P1 inches	P2 inches	P1 inches	P2 inches	T inches
50	1/2"	1 1/2"	1"	1"	1"	1"	1 1/4"	1 1/4"	1 1/4"	1 1/4"	1/2"

Size table

Ht mm	Lt mm	Pt mm
860	520	240



Legend

1. Temperature probe holder 1/2" thermowell
2. Arrangement for 1 1/2" electric heating element
3. Automatic air vent valve
4. Insulation
5. Wall brackets for wall installation
6. Communication between rooms
7. Partition between the 2 chambers
8. Internal extensions to prevent hydraulic short circuits and maintain separation between flow and return.
9. 4 x 1 1/4 connections for primary sources
10. 4 x 1" connections for 2 groups

Inertial storage

WHP S 100

WHP S 100 is the new and innovative ultra-flat rectangular inertial storage tank with a capacity of 100 litres, designed to guarantee the minimum water content in the system for the correct operation of the heat pump (HP). Designed to be positioned outdoors. It also acts as a base to support the HP (max 200 kg). These features make it unique and exclusive and definitively eliminate the need for additional indoor space. Already prepared with anti-vibration HP support kit. Pre-arranged for installation of the expansion tank through the special kit supplied separately.

Plus

- ✓ Ultra-compact rectangular mini-storage tank to support the HP.
- ✓ Heating/cooling use.
- ✓ Thermal insulation and metal cover suitable for outdoor use.
- ✓ Corrosion-resistant hydraulic module.
- ✓ Universal HP bracket.
- ✓ Adjustable support feet.
- ✓ Double manual air vent.
- ✓ Low pressure drops, flow rate up to 4.5 m³/h.
- ✓ Anti-vibration kit

Collector material: S235 steel

Anticorrosive surface treatment: Epoxy cataphoresis

Insulation

Limit of use

Capacity (L)	Type
100	Trocellen C080 RN2 sp 40mm λ 0.034 W/ mk

Temp. min.	Max. temp.	Max. pressure	Max. load	Perc. max. glycol
-10 °C	90 °C	6 bar	200 kg	30%

Description	WHP S 100		Energy Class	With packaging	
	Code	Price each		Dim. cm	Weight kg
WHP S 100	317010417X	1.615,00 €	C	120 x 80 x 50	86
WHP S 100 EXTENSION KIT	329031110X	238,00 €		78 x 58 x 29	
EXPANSION POT KIT 12L	338082490X	200,00 €		60 x 28 x 20.5	

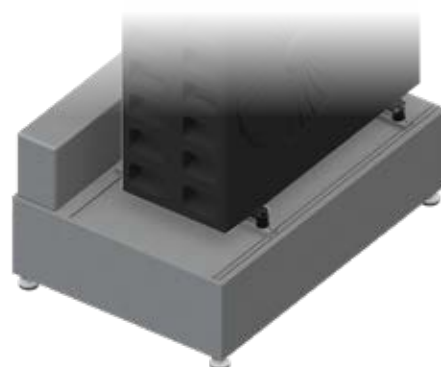
 **Standard accessories:** see page 102



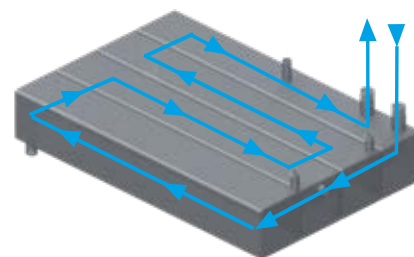
PRICES



ACCESSORIES
PRICES



Optimised flow management



Inclined chamber for facilitate air venting

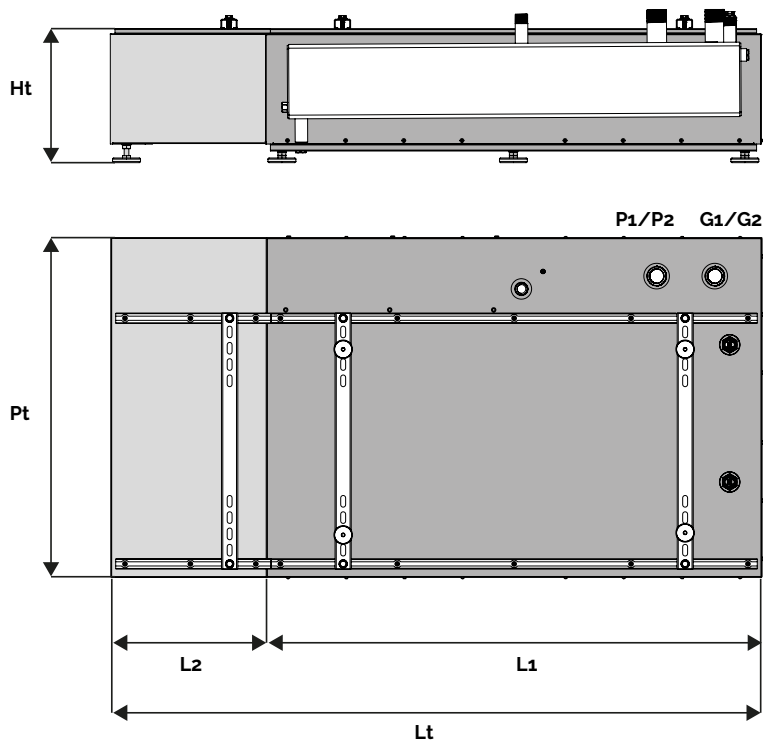


**Suitable for Heat Pump
FURIA 6 - 8 - 12 - 18 kW**

See page 16

Inertial storage: Dimensions

WHP S 100



Connection legend

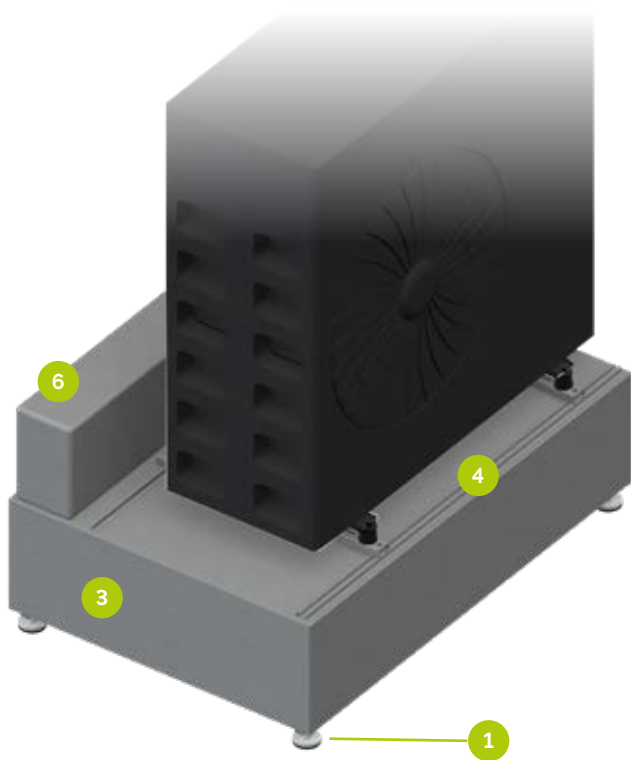
G1/G2	Input/output to system
P1/P2	Input/output from energy source

Connection table

Capacity L	G1/G2 inches	P1/P2 inches
100	F 1" - M 1¼"	F 1" - M 1¼"

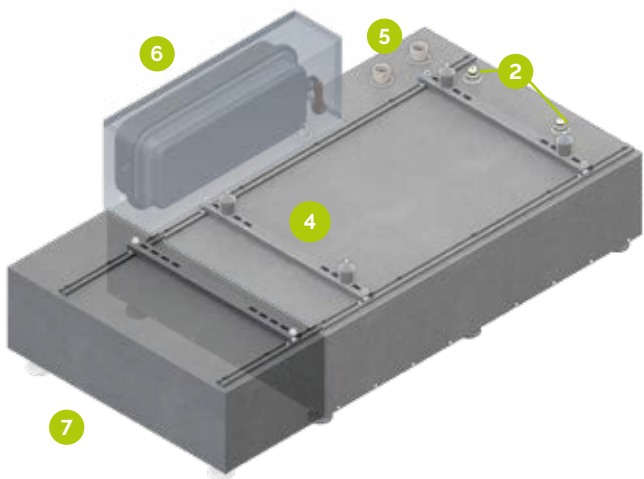
Size table

Cap. L	Ht mm	Lt mm	Pt mm	L1 mm	L2 mm
18	288	1400	730	1065	335



Legend

1. 4 Adjustable support feet.
2. 2 Manual air release valves.
3. Weatherproof metal cover
4. Universal HP Adjustable Brackets + Anti-vibration Kit
5. 2 inlet and outlet connections from: F 1" - M 1¼.
6. Expansion tank. (Accessory)
7. Extension KIT. (Accessory)



Wenkel S.r.l

Registered and operating office: Via E. Mattei 13/F – 31030 Casier (TV) – P.I. e C.F. 08456530966 – REA: TV-422447

Registered with the Companies' Register of Treviso-Belluno under No. 08456530966 – Share Capital €98.000,00

Tel. 0422/672911 • Fax 0422/340425 • e-mail: info@heizersile.it • www.heizersile.com

Subject to control and coordination by Fiorini Industries S.r.l.

